

AURA

Moser

AURA

BORN IN THE GLOW OF THE
NORTHERN LIGHTS

Moser

CONTENTS AURA COLLECTION

VASES IN GLOSSY FINISH
DRINKWARE SET
VASES AND BOWLS IN MATTE FINISH



AURA

**THE MOMENT WHEN
THE AURORA BOREALIS
PERMEATES THE ICY
LANDSCAPE**

The unique moment when crystalline perfection unites with craftsmanship, brilliantly achieved. Pieces from the Aura Collection radiate profound authenticity, full of emotional charge and surrounded by a nearly tangible atmosphere. Created without haste and guided by time itself, each piece reflects the belief that perfection reveals itself only when allowed to unfold. Just as the light in the sky transforms, so too does the glowing glass in the hands of the master, giving rise to a work that emanates calmness, yet remains intensely alive.

JAN PLECHÁČ

CREATIVE DIRECTOR AND DESIGNER JAN PLECHÁČ

Renowned designer and graduate of the Academy of Arts, Architecture and Design in Prague. He became Art Director at Moser in 2022, and the glassworks has seen an array of successes under his guidance. Alongside the three wins at the Czech Grand Design Awards 2023 (Designer of the Year, Producer of the Year, and as the overall winner – Grand Designer), it also received the Grand Prix – the Award for Outstanding Achievement for the “Born of Sand” installation at Designblok 2024.



THE AURA COLLECTION IS ETCHED
WITH THE MOSER LOGO AND THE
DESIGNER'S SIGNATURE.



VASES IN GLOSSY FINISH

CRYSTAL CARVED FROM
THE ARCTIC NIGHT

Three vases of glistening crystal, almost as if they were hewn directly from the ice. Be immersed in the arctic night—clear, cool, and breath-taking. The greenish tone at the bottom of the vases gradually flows into a deep blue, like when the mysterious light of the aurora borealis penetrates the dark sky.



AURA

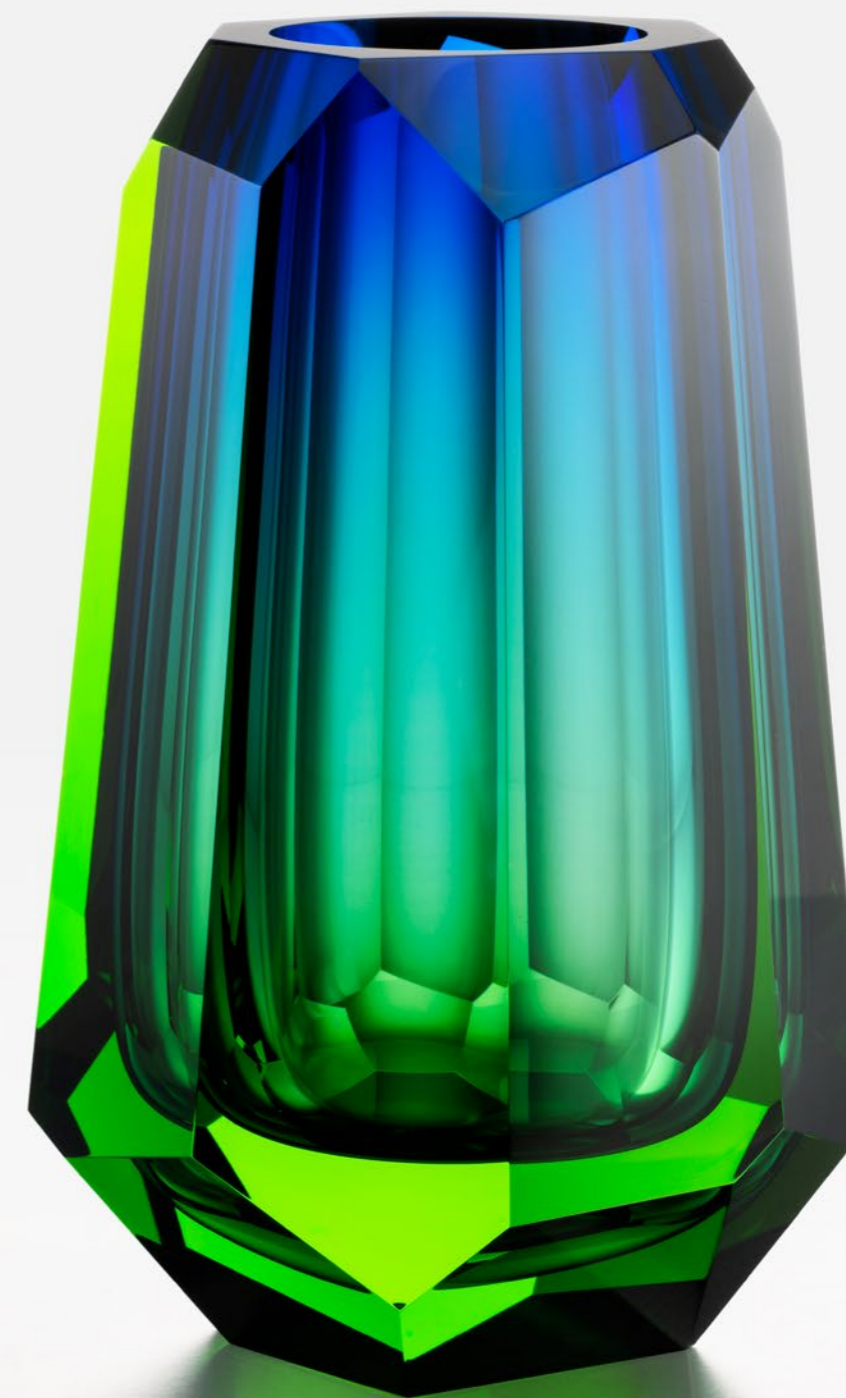
The Aura vases are masterfully cut by the best facet cutters. Not only must they possess the physical strength to hold the heavy vases in their hands, but also have the delicate feel needed to work on glass. The vases have a closed neck, which is also dark blue, meaning the cutter can't see inside, yet it's absolutely crucial they accurately estimate the depth of the molten glass.



VASE
glossy cut
ocean green blue
8.3 x 35 cm / 3.3 x 13.8 in
3524



VASE
glossy cut
ocean green blue
8.7 x 21 cm / 3.4 x 8.3 in
3522



VASE
glossy cut
ocean green blue
10.8 x 26 cm / 4.3 x 10.2 in
3523



THE PURITY OF CRYSTAL,
THE SPARKLING COLD
OF NORTHERN ICE

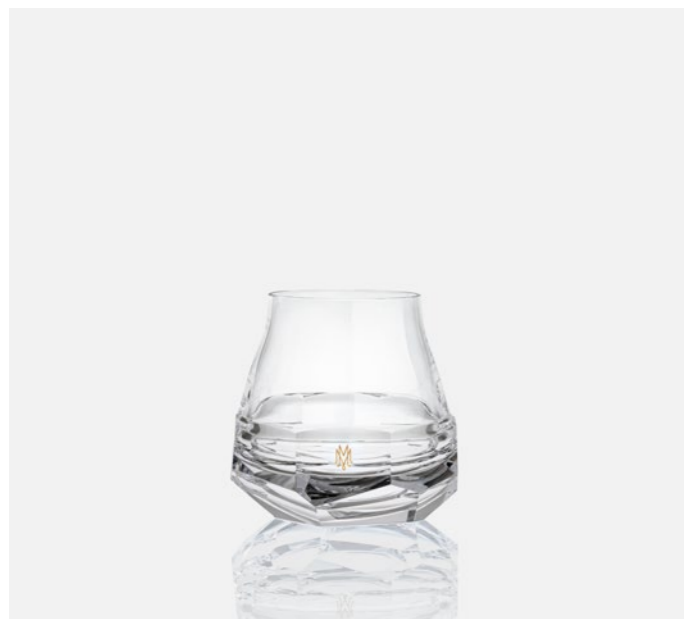
It's distinct; cut edges evoke the sparkling cold and sharp structure of ice. Here, the cutter acts as a sculptor, carving away individual pieces from the mass of ice, revealing the refined, elegant shape within. This is pure facet-cutter work, conjuring the sense of winter, ice, and the strength of the glassmaker's craftsmanship. Each piece invites quiet attention, as its beauty reveals itself gradually—an experience best savored, never rushed.

AURA

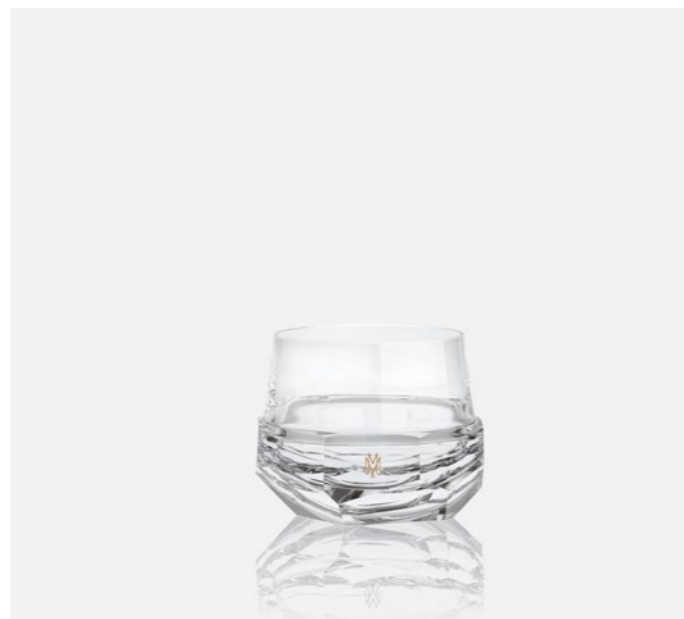
Every piece in this drinkware set – rum, whisky, and water glasses, as well as a carafe for distillates and a bottle – bears the golden Moser logo, which shines on the pure crystal like a flash of light imprisoned in ice. The top section of each individual piece impressively contrasts with the massive base that appears hewn from ice.



DECANTER
glossy cut and gilded
14.6 × 27.5 cm / 5.75 × 10.8 in / 750 ml / 25.36 oz
clear / 30430



WHISKY GLASS
glossy cut and gilded
8.9 × 8.6 cm / 3.5 × 3.4 in / 200 ml / 6.76 oz
clear / 30422



RUM GLASS
glossy cut and gilded
8.9 × 7.1 cm / 3.5 × 2.8 in / 180 ml / 6.08 oz
clear / 30423

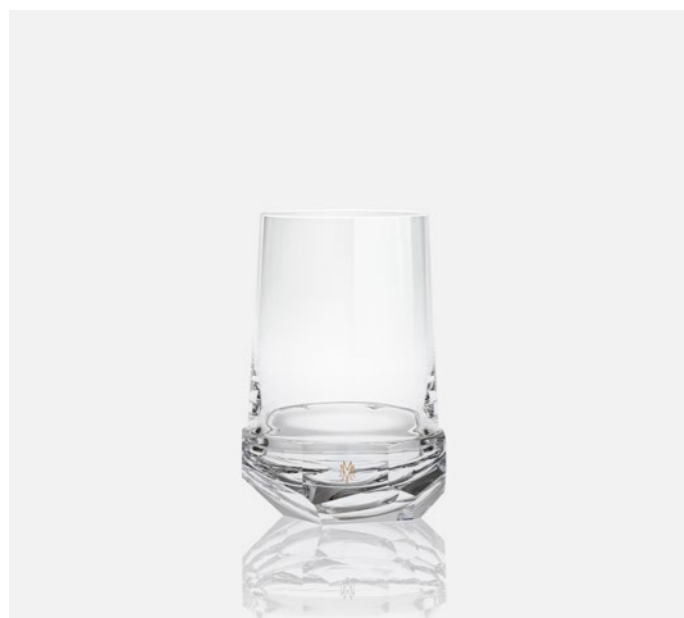
RETAIL AND E-COMM EXCLUSIVE
The Aura glassware collection may be approached individually.



AURA



CARAFE
glossy cut and gilded
12 × 25 cm / 4.72 × 9.8 in / 900 ml / 30.43 oz
clear / 30420/KAR



WATER GLASS
glossy cut and gilded
8.6 × 13 cm / 3.4 × 5.1 in / 400 ml / 13.52 oz
clear / 30421

RETAIL AND E-COMM EXCLUSIVE
The Aura glassware collection may
be approached individually.





**COLOURS OF THE POLAR
NIGHT REVEALED TO THOSE
WHO PAUSE AND LINGER**

The crystal collection with multi-coloured cores expands the story on one of nature's most breathtaking phenomena. The matte crystal appears like a crystalline crust—as if the surface of the glass is covered in delicate rime ice. The colors of the Aurora Borealis reveal themselves gradually to those who pause and linger, inviting a quiet, unhurried exploration of their shifting beauty.

The vases and bowls are available in the following colour combinations:

blue aurora amethyst,
carnelian rose amethyst,
and green blue reseda.

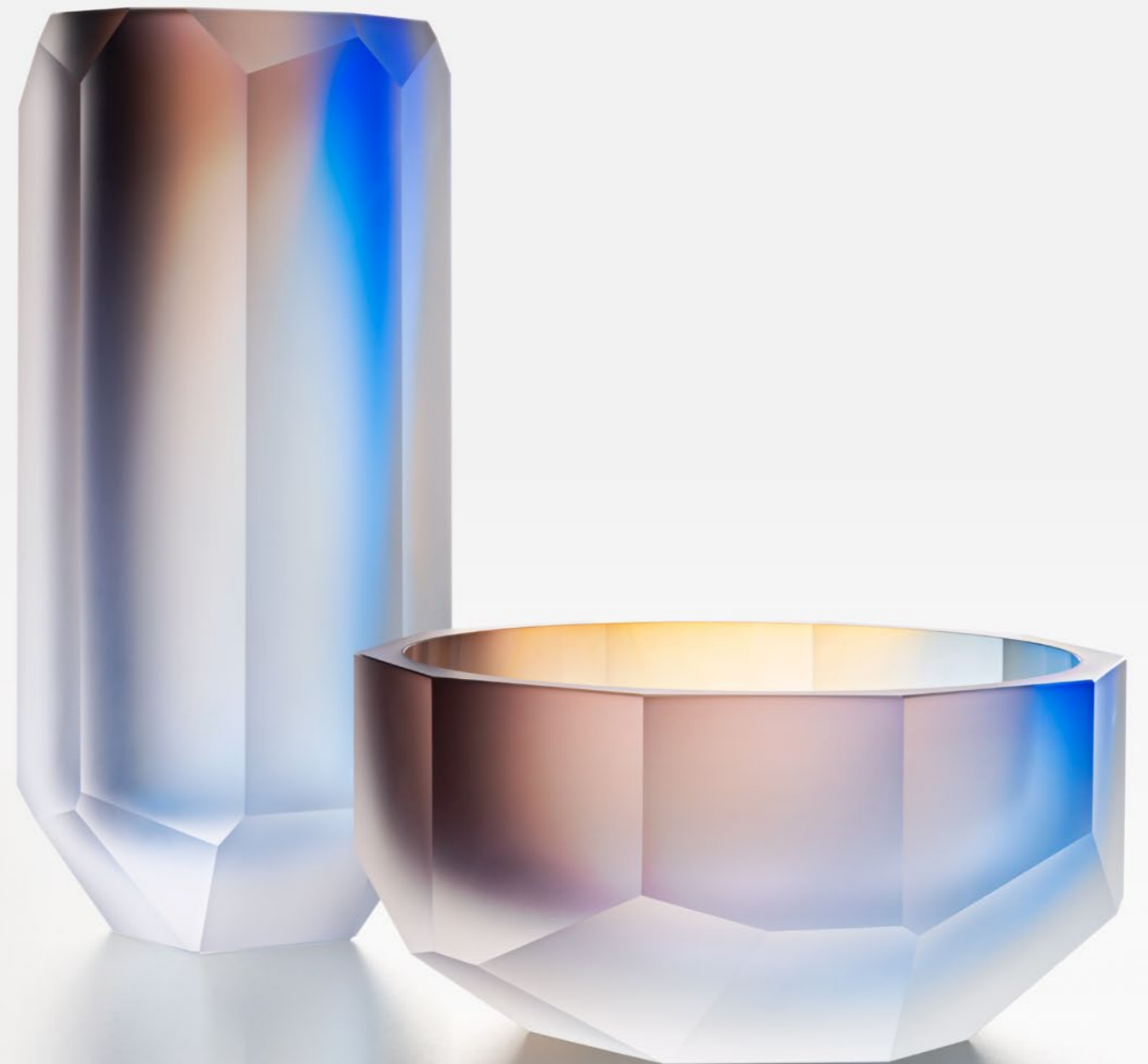
Jan Plecháč, Creative Director at Moser, chose these hues from Moser's rich sample book, and the glassmakers even created the new carnelian colour specially for this collection. It's the result of combining original recipes, and it bears the name of a precious stone that radiates warm, orange tones. Thus, the glassmakers further build upon the legacy of Leo Moser, creator of the famous Moser colours.



VASE
matte cut
blue aurora amethyst
16.5 x 34 cm / 6.5 x 13.4 in
3525



BOWL
matte cut
blue aurora amethyst
26 x 12.5 cm / 10.2 x 4.9 in
3521



AURA

Beautiful and hued valeurs permeate this frosty layer, while the tri-coloured cores create unexpected tones and capture the luminous dynamics of the aurora borealis.



VASE
matte cut
green blue reseda
16.5 x 34 cm / 6.5 x 13.4 in
3525



BOWL
matte cut
green blue reseda
26 x 12.5 cm / 10.2 x 4.9 in
3521

Extraordinarily challenging.
Annual production limit of 12 pcs.



Although the Aura Collection of matte vases and bowls isn't limited, it is exceedingly rare. Even the Moser masters, completely dedicated to their craft, are only able to create 12 pieces of each type every year. These exceptional works are brought to life slowly, requiring sufficient time. Such incredible beauty demands as much. But the expectations and anticipation only deepen its value – just like the joy that's felt when the collection finds its way into the hands of someone who truly appreciates it.

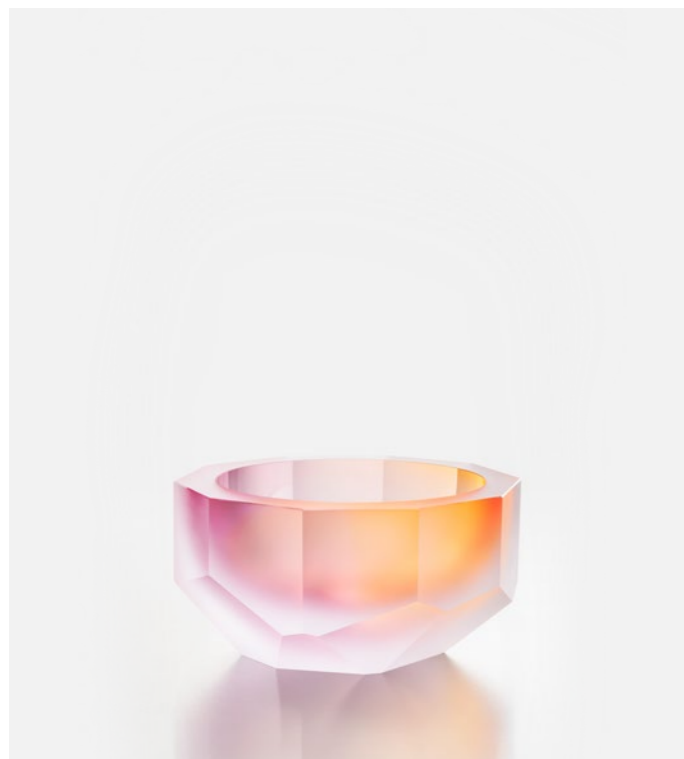
The entire process of blowing the tri-coloured cores is quite literally alchemy, where the individual colours must meet each other at precisely the same moment. Cutting these vases is a test of strength and patience; the cutter has to hold in their hands a vase weighing as much as 12 kg.

VASE

matte cut
carnelian rose amethyst
16.5 × 34 cm / 6.5 × 13.4 in
3525

BOWL

matte cut
carnelian rose amethyst
26 × 12.5 cm / 10.2 × 4.9 in
3521



Extraordinarily challenging.
Annual production limit of 12 pcs.
Minor tolerances in dimensions
or colours reflect the handcrafted
nature of our masters' work.

MOSER.COM

Project team
Designer: Jan Plecháč
Cooperation: Daniel Gonzalez, Ondřej Lalák
Art Direction and Styling: Kristýna Mikolášková
Photography: David Švehla, Barbora Lundgren

